

# SPANNER & WRENCH COLLECTOR

HAND TOOL PRESERVATION ASSOCIATION OF AUSTRALIA  
Inc. Reg No A0025953J



Spanner Special Interest Group Newsletter

www.htpaa.org.au

No 23 February 2016

Welcome to Edition 23, Issued in conjunction with the "Tool Chest" number 119.

If you require a copy of a back issue, contact the editor (see back page). Keep the contributions coming so that we can cover a broad range of topics.

An index of spanners covered so far is available from the Editor.

If you have an email address, and would like a colour copy of this newsletter in .pdf format, contact the editor.

## Contents this issue:

Pg 1 **Shearing Tools** from G Radion collection(m)

Pg 2 **Frederick Selby & Co Ltd** [continued] by George Radion

Pg 2-4 **Mystery Spanners** from the Joe Caruana Collection

Pg 5 **De Dion Bouton** From Rowan Dryden

Pg 5 **Palmer & Sons** by G Radion (m)

Pg 6 **Burston Wrenches** G Radion & G McLeod, (m's) & Bob Wallis

Pg 7 **Sock-o-matic & Stanley Hex-a-Matic** by G Radion (m)

Pg 8 **Draper & Sons (BDS)** by G Radion (m)

Pg 8 Adverts & Housekeeping



**Frederick Selby & Co Ltd** [continued] by *George Radion*

In Issue no 21 I discussed an adjustable wheel wrench marked "Selby's Matchless".

Included in the discussion was a simple axle wrench marked Selby Co.

In issue no 22, we had feedback from Michael Potter (m) about axles and the adjustable types like the Selby.

I also included some newly found advertising for a "Frederick Selby & Co Ltd of Birmingham, England" which solved the Selby mystery.

Following on from that I realized that a bunch of mystery axle wrenches marked "F. S. & Co" - see pic below were likely from the same company.

The full name of these F S & Co wrenches had eluded me until the advertising was found.

The markings on these wrenches are rather inconspicuous, as the initials are often quite faint, and usually on the underside, where the casual observer might miss them if in a hurry on a buying excursion.

**The Australasian Coachbuilders and Wheelwright May 15, 1911**

---

Gold and Silver Medals Awarded—Calcutta, 1884; Antwerp, 1885; Paris, 1885; Amsterdam, 1883; Glasgow, 1886

**"Selby" Axles—Once used, always used.**

## Frederic Selby & Co., Ltd.

Manufacturers of Interchangeable Colling's and Mail Axles, Australian Dray Axles and Drabble's Patent Van lines, and springs of high-class quality; Lamps, Bolts, Fore Carriages, Brake Fittings, Self-acting Steps, and General Coach Ironmongery.

**Longmore Street Works, Birmingham, England**

When writing advertisers please mention THE AUSTRALASIAN COACHBUILDER AND WHEELWRIGHT.



While on the topic of axle wrenches, there is a newly published book by Mike Hendrikson O.A.M., experienced wheelwright, and blacksmith. In Mike own words he mentions "I suppose the flashiest job I did was manufacture from scratch the wheels and axle box assemblies for the "Australian Bi-Centenary Coach" that was given to and is used often by the Queen of England" (and Australia for that matter while our monarchy exists).

The book is called ""The Secrets of Wheelwrighting" and is the third of Mike's books. Details on purchase of it and the preceding two books are covered in this months Sharp Edge.

A mystery plough spanner was shown to me by member Joe Caruana recently.

Research on Trove has numerous entries for the results of ploughing matches being won with McKenzie ploughs.

The lettering on this spanner is indistinct but looks like McKenzie - plough makers and blacksmiths don't always use the correct spelling, and I suspect that it is a McKenzie plough spanner.



## More Mystery Spanners from Joe Caruana (m)

Joe brought a bunch of mystery spanners to show me at a recent swap meet.

Lack of suitable photographic background saw us arranging them on the carpet in the boot of his car, so apologies for the quality of these pictures.

This one is marked Crawford & Co.

The Wangaratta Chronicle has an entry dated 1914:

### "Crawford & Co

*Horses, Buggies and Conveyances of every description for hire at every Township in the North-Eastern District. Relays for horses provided, fed and attended to free of charge. Horses kept by the week at moderate rates. Picnic parties and others well provided for. Our Cabs attend the arrival and departure of all Railway Trains in the district"*

This is likely to be a coach wrench for one of their many conveyances.

Ref: Trove

This wrench marked only "52" in raised numbers, with open ends and enclosed box openings is still a mystery - we would like to hear from anyone who has a listing to identify it. It is a large wrench.

Another mystery marked GC83 in raised letters. And a large wrench at that - we could not identify it, and the same goes for all of these orphans - if someone can identify any of them, please make contact.

### Killifer Co

T wrench marked Killifer CF 88

*In 1893 John Killifer started a factory in San Bernadino, CA to manufacture his chisel or pan breaker which was able to deal with the heavy soils.*

*The company moved to Los Angeles in 1895.*

*By 1920 the business had outgrown that site and had to expand to another in LA.*

*In 1922 John died aged 79, and his son Robert took over.*

*Robert died suddenly in 1926 and his daughter Katherine operated the company for another 11 years. Business expanded rapidly and weathered the depression years. In 1937 the company was sold to John Deere Plow Co. By 1947, the plant was still operating, but later was closed and manufacture moved to other John Deere plants. The company manufactured heavy tillage equipment principally for the West(USA).*

Reference Rathbone Vol 1



## The Moon Motor Car.

Joe's pièce de résistance

A vintage car / truck hub spanner marked MOON No 13

From Wikipedia, the free encyclopedia

The Moon Motor Car (1905 - 1930) was a United States automobile company that was based in St. Louis, Missouri. The company had a

venerable reputation among the buying public, as it was known for fully assembled, easily affordable mid-level cars using high-quality parts. Often this meant the manufacturing process required more human intervention, leading to operating losses.

The company was founded by carriage maker Joseph W. Moon. Moon produced both cars and trucks. Moon Motor's peak production year was 1925 when the company produced 10,271 vehicles.  
History

In addition to the Moon name, Moons were sold under the Hol-Tan name in 1908. Moon produced the Diana via its subsidiary the Diana Motors Company in 1925 - 1928. Another subsidiary produced the Windsor in 1929-1930.

The firm also produced a Cotton picker built under contract from the American Cottonpicker Corporation.

Beginning in 1924, Moon was increasingly unable to meet dealership orders. The company went out of business at the start of the Great Depression; the Moon factory was purchased by Ruxton automobile.

Moon automobiles are on display at the Missouri History Museum and Museum of Transportation in St. Louis, Missouri. The amusement park Six Flags St. Louis also features a ride using the Moon automobile body.



Moon Motor Car Company  
Founded 1905 by Joseph W. Moon  
Defunct 1930  
Headquarters St. Louis, Missouri, United States



## J K Byrne, Tongala

Another of Joe's recent finds, blacksmith made wrench marked J. K. Byrne, Tongala. This is a large SOE, around 30 inches long.

It is fairly unusual to find Blacksmith made wrenches marked with their name, let alone their locality.

This is an important part of local history for the Northern regions of Victoria.

Readers are invited to submit other named Blacksmith wrenches, and if possible some info about the maker for inclusion in future editions.

## De Dion Bouton *From Rowan Dryden*

Rowan sent a picture of a recent find. We don't know which vehicle it was issued with. It is a historic piece, from somewhere in the years 1883 to the demise of the company in 1950's.

Some information from Wikipedia, the free encyclopedia

*De Dion–Bouton De Dion Bouton (3962126440).jpg*

Founded 1883

Founder Jules-Albert de Dion, Georges Bouton, Charles Trépardoux

Defunct 1932

Products Automobiles  
and railcars

*De Dion-Bouton was a French automobile manufacturer and railcar manufacturer operating from 1883 to 1932. The company was founded by the Marquis Jules-Albert de Dion, Georges Bouton, and Bouton's brother-in-law Charles Trépardoux.*



*The company was formed after de Dion in 1881 saw a toy locomotive in a store window and asked the toymakers to build another. Engineers Bouton and Trépardoux had been making a starvation living on scientific toys at a shop in the Passage de Léon, close to the "rue de la Chapelle" in Paris.*

*Trépardoux had long dreamed of building a steam car, but neither could afford it. De Dion, already inspired by steam (though in the form of rail locomotives) and with plenty of money, agreed, and De Dion, Bouton et Trépardoux was formed in Paris in 1883. This became the De Dion-Bouton automobile company, the world's largest automobile manufacturer for a time, becoming well known for their quality, reliability, and durability.*

*A rumored takeover by Peugeot or Mercedes did not materialize, leading to the end of passenger car production in 1932.*

*Small numbers of commercial vehicles were made until 1950; the last vehicles to carry the De Dion badge were licence-made Land Rovers in the early 1950s. The company name was bought by a motorcycle maker in 1955.*

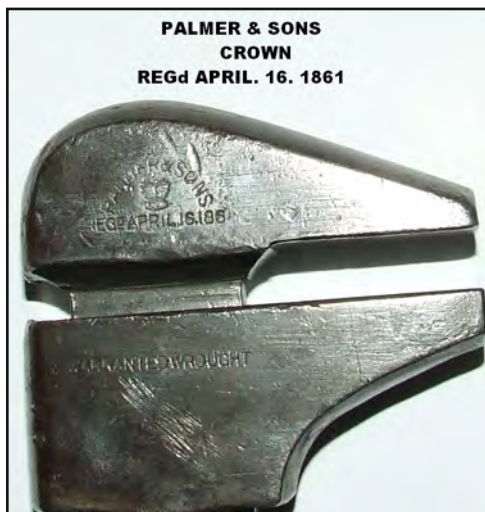
## Palmer & Sons by G Radion (m)

A bid on a set of wrenches at a Hans Brunner (m) auction recently was successful in securing this set of wrenches marked "Palmer & Sons, crown, Regd April 16 1861, Warranted Wrought"

While bidding, I did not realise how big the large one was.

On arrival the package felt like it contained a few house bricks or a small anvil. The largest is 22 inches long and weighs 4.5 Kg.

In my opinion, Hans' tool auctions can be a source of fine tools to fill gaps in one's collection, and I recommend that Hans Brunner auction catalogues be inspected closely when they are issued.



## Burston Wrenches G Radion & G McLeod, (m's)

A contribution to this newsletter from Graeme McLeod (m) who is also member of SAHTA, relates to the Burston Adjustable wrench, and reads as follows:

"Hello George,  
I thought you may want these photos to add to the spanner & wrench collector.

The spanner is 8" long with an adjustment range of 1/2" to 1 3/16" from a circular wedge operated by ones thumb.

On one side it has Chas. Richards & Sons Ltd Daraston England and on the other side is Burston 26-1-32 British Pat. 384468

We at SAHTA are going to put together an automotive tools display board, and this spanner will go towards the display.

Graham McLeod"

Thanks Graham, do send a picture of the display board when ready.



More on Burston from Bob Wallis, President of the Hand Tool Preservation Society of Western Australia. Bob has sent a document called his "Compendium of Adjustable Wrenches" in which he details his collection of adjustable wrenches, and it runs to 50 pages and covers a wide range of interesting items.

Bob has three Burston wrenches in his collection. Reproduced here with permission.

from **Bob Wallis**

Regarding No's 58, 59 and 60, (the numbers are from Bob's compendium):

The Cam Spanners are all manufactured by Chas Richards & sons Ltd of Darlston England. Under the signature range of "Burston". The British Patent No 384468 on the 26/1/1932, and they all differ.

No 58 is 205 mm in length. No 58 and 60 are marked the same but differ in length.

No 59 is 210 mm in length. Differs distinctly from the others (writing) and does not have the 'peg' on the adjusting device.

No 60 is 225 mm in length.

Thanks Bob, for sharing your Compendium with us.



## Sock-o-matic by G Radion (m)

I have had these two nut drivers for a while now, with the larger, most recent one a gift from a member.

The larger one is unmarked and has provision for 5 nut sizes. The smaller is marked "Sock-o-matic" and has provision for 4 nut sizes.

An advertisement in Popular Mechanics from June 1965 reads thus:

*Sock-o-matic wrench does the work of four individual wrenches. The socket has three spring loaded inserts. When you push it onto any hex nut from 1/4 to 7/16 in., one, two or all three inserts recede, automatically creating an opening of the proper size. Ideal for assembly work. \$6.95. Silverbrook Manufacturing Corp., 1341 Hamburg Tpk., Wayne, H.J.*

Pictured at far right is the detail of the mark on the small nut driver.

At right is the patent drawing for pat 3,250,158 awarded to Edward J Marshall on May 10th, 1966. Which seems a bit odd, as the Popular Mechanics advert. appears about a year earlier.

There is a lot of information about this product, and indeed a lot of information about any and all sorts of things on a blog I found by someone who calls himself the Duke.

A must to visit: <http://progress-is-fine.blogspot.com.au/?view=timeslide>.

## Stanley enters the game

Stanley released a rival product in short course called the **Stanley Hex-a-Matic**.

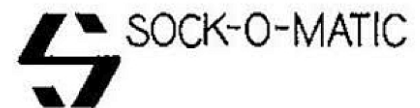
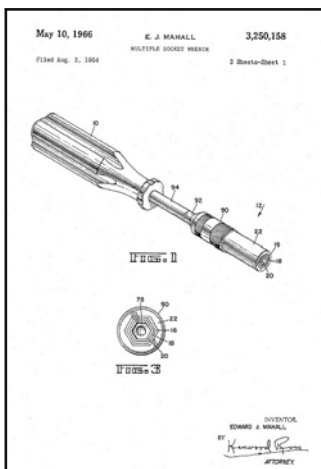
Everybody was trying to cash in on "a-matic" in the Sixties.

Note the nested collets, intended to grip different sizes of nuts or bolt heads. It was clearly designed to compete with other similar tools like the Ideal Sock-o-Matic wrench featured in a previous blog entry. Here's how Stanley advertised it back in the day:

### *Hand tool drives 15 nut sizes*

*Featuring a six finger collet chuck, the Hex-a-matic tool from Stanley adjusts to any of 15 standard nut sizes, automatically locking in position when driver is pushed down. Accommodates five hex nut sizes from 1/4 to 7/16 in., and five socket head cap screws from No. 8 to 5/16 in. Dept. PID, Stanley Works, New Britain, Conn. 06050.*

The above Stanley info from the same blog described above. More info required.



SOCK-O-MATIC Trademark



## BDS by G Radion (m)

For some time I have seen various tools with just the mark BDS either in an overlapping circle arrangement or unadorned. The maker eluded me until recently, while I was searching through a Benn's Hardware Directory, (1969 ed). There were adv's for **DRAPER** and also **BDS** and both were by **B. Draper & Son Ltd.**

The company is still in existence, and their website explains that Draper made their own line of tools but were & are a factor for famous brands as mentioned below.

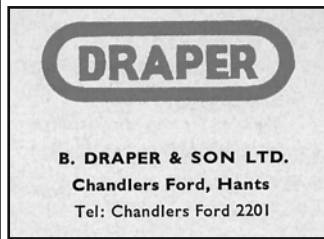
Adv:

### **DRAPER TOOLS ESTABLISHED IN 1919 A COMPANY WITH HISTORY**

*Draper Tools started out in 1919 when the founder, Bert Draper, sold government surplus and tools around the Kingston Upon Thames' markets. This led to the purchase of the original warehouse, from which the Draper Tool Company Limited as we know it today was born, although at this time it was known as B. Draper & Son Limited and owned the trademark B.D.S. Although Drapers sold its own brand as early as this time, it was also a quality Engineers Merchant and Tool Wholesaler, selling brands well known today, such as, Britool, King Dick, Elliott Lucas, etc.*

Another mystery solved by that valuable reference source Benn's Hardware Directory.

Draper marks, left and centre from Benn's Hardware Directory 1969.  
The dark one on right is from the Draper website today.



**ATTENTION SPANNER COLLECTORS:** Missing one or two out of a set? Need auto or machinery toolkit replacements? Want a one-off from an obscure maker? I have many older, branded and unbranded spanners that I will sell individually. All have been cleaned up and rust treated. They will be modestly-priced, plus packing and postage. I'm not a dealer. (HTPAA member) Please email me Peter Wood at: [peter.wood@internode.on.net](mailto:peter.wood@internode.on.net) with your requirements.

New book soon to be released: "**The Adjustable Spanner, History, Origins and Development to 1970**" by **Ron Geesin** ISBN 978-1-78500-035-5. this book deals solely with British adjustable spanners. The expected October release had slipped to Christmas, the Christmas release has slipped again, now possibly April. If you have access to a computer, look up Ron's video clip about his spanner collecting and spanner book on You Tube, type in this URL: <https://www.youtube.com/watch?v=Ev4qo5zKqWY>, or go into You Tube and search for "The adjustable spanner Ron Geesin"

**Wanted to buy or swap** - Double ended Crescent shifters, cast iron seats, farm machinery nameplates, parts lists and interesting spanners for agricultural, vintage motor vehicles and vintage motorbikes, etc, also other interesting shifters and spanners & tool company catalogues such as Sidchrome, Britool, Bahco, Hazet, T Williams (UK & USA) etc. Contact G Radion.

**Spanner & Wrench Collector back issues:** Issues 1-22 now available in a folder with clear pockets and provision for extra issues. \$25 plus P & P, or collect at a club event by arrangement. Postage will be calculated for a parcel over 500 grams - Call the editor.

*Feedback from those who find this newsletter useful would be appreciated. **Continued contributions are required to keep it interesting.** Thanks to those who have sent content, your stuff will all be used eventually.*

This Issue Edited by George Radion.  
Contact by snail mail: PO Box 4021, McKinnon, Vic 3204  
Contact by email: [george@htpaa.org.au](mailto:george@htpaa.org.au), phone 03 9557 1178, mob 0406 687 980

Aims of the Spanner & Wrench SIG:  
Promote the conservation, identification and collection of spanners & wrenches and to share information with the group to that end.